



Overview of Hazard Incidence, August, 2016

Natural hazards that occurred in August include Boat capsized, Lightening, Earthquake, Storm, Riverbank erosion, flood and Waterlogging. Apart from these hazard, Fire and Bridge collapse was the only manmade disaster reported in this month.

Flood effects treacherously the districts of Lalmonirhat, Kurigram, Gaibandha, Jamalpur, Sirajganj, Sunamganj, Bogra, Rangpur, Nilphamari, Faridpur, Rajbari, Tangail, Madaripur, Shariatpur, Manikganj, Dhaka, Kustia, Munshiganj, Nawabganj, Rajshahi and Chandpur by the mid of July. In this month, earthquake attacks at Dhaka and Chittagang which also felt at the adjacent districts.

Waterlogging at Jessore propagates a detrimental impact on the socio-economic life of the people. All the other hazards like storm, riverbank erosion, boat capsized, lightening, bridge collapse, that took place in this month have unequivocal impacts on human lives.

August, 2016						
Sunday	Monday	Tuesday	Wednesday	Thursday	Friday	Saturday
	☾	☾	☾	☾ 🚤	☾	☾
	1	2	3	4	5	6
☾	☾	☾	☾ 🔥	☾	☾	☾
7	8	9	10	11	12	13
☾	☾	☾	☾	☾	☾	☾
14	15	16	17	18	19	20
☾ 🌀	☾	☾	☾	☾ 25	☾ 26	☾ 27
☾ ⚡ 🔥 21	☾ ⚡ 22	☾ ⚡ 23	☾ 🏠 🚧 24			
☾ 28	☾ 29	☾ 30	☾ 31			

Hazard Incidences in Bangladesh, August, 2016



Creation Date: 03 September, 2016

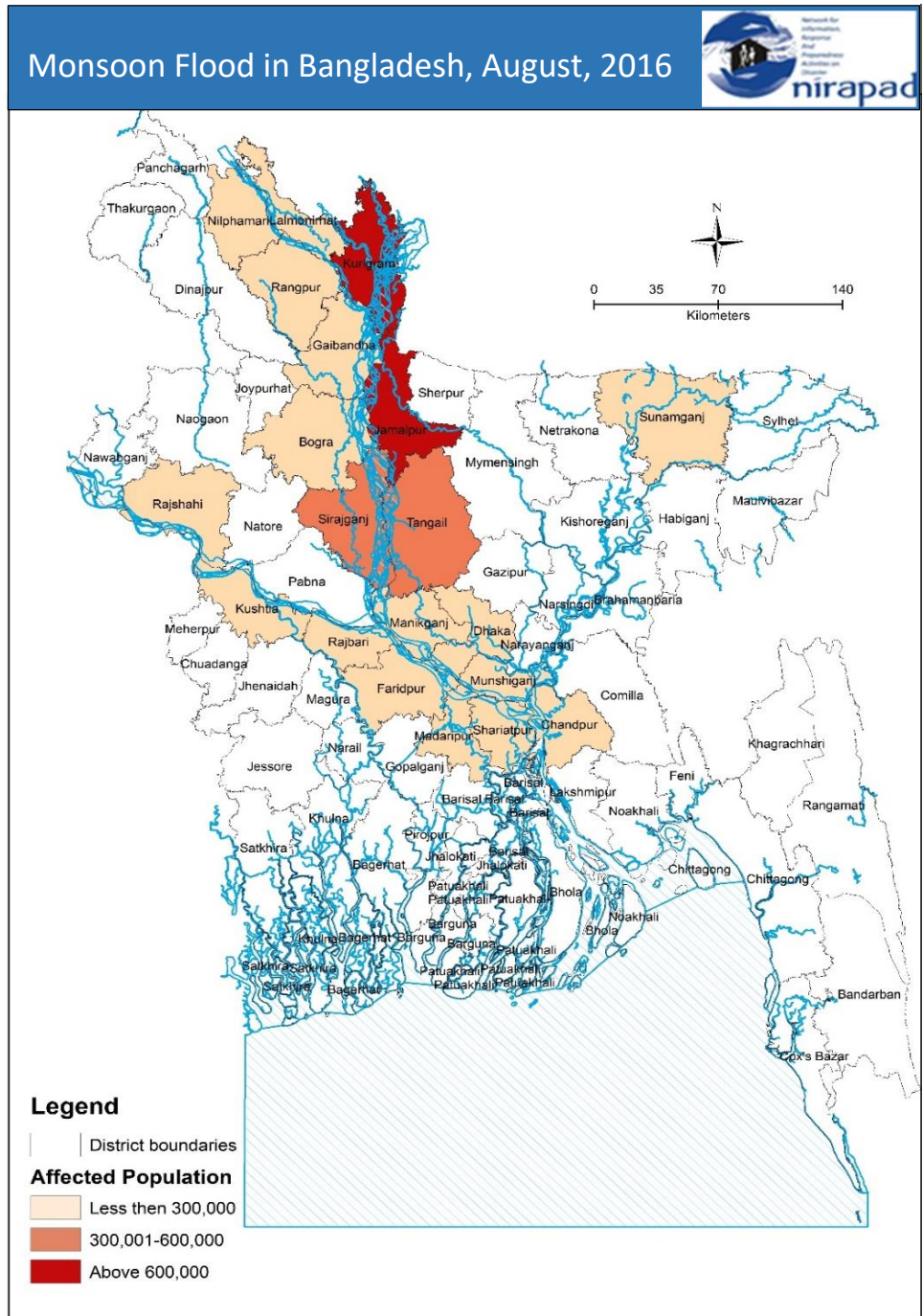
Source: NDRCC Reports and Dailies

Description of the Hazard Incidents, August, 2016

Flood:

The rising water level of rivers in the north started to flow over the danger level which results massive flood in districts like Lalmonirhat, Kurigram, Gaibandha, Jamalpur, Sirajganj, Sunamganj, Bogra, Rangpur, Nilphamari, Faridpur, Rajbari, Tangail, Madaripur, Shariatpur, Manikganj, Dhaka, Kustia, Munshiganj, Nawabganj, Rajshahi and Chandpur by the mid of July.

The impacts of these districts are very detrimental. In these districts, flood water entered in, put together, 91 upazilas. It inundated crop fields and dwelling areas. It also washed away amenities and facilities, standing crops and livestock, damaged, houses and households assets are destroyed, and people became homeless.



Creation Date: 03 September, 2016

Source: NDRCC Reports and Dailies

Table 1: Overall Flood situation, August, 2016

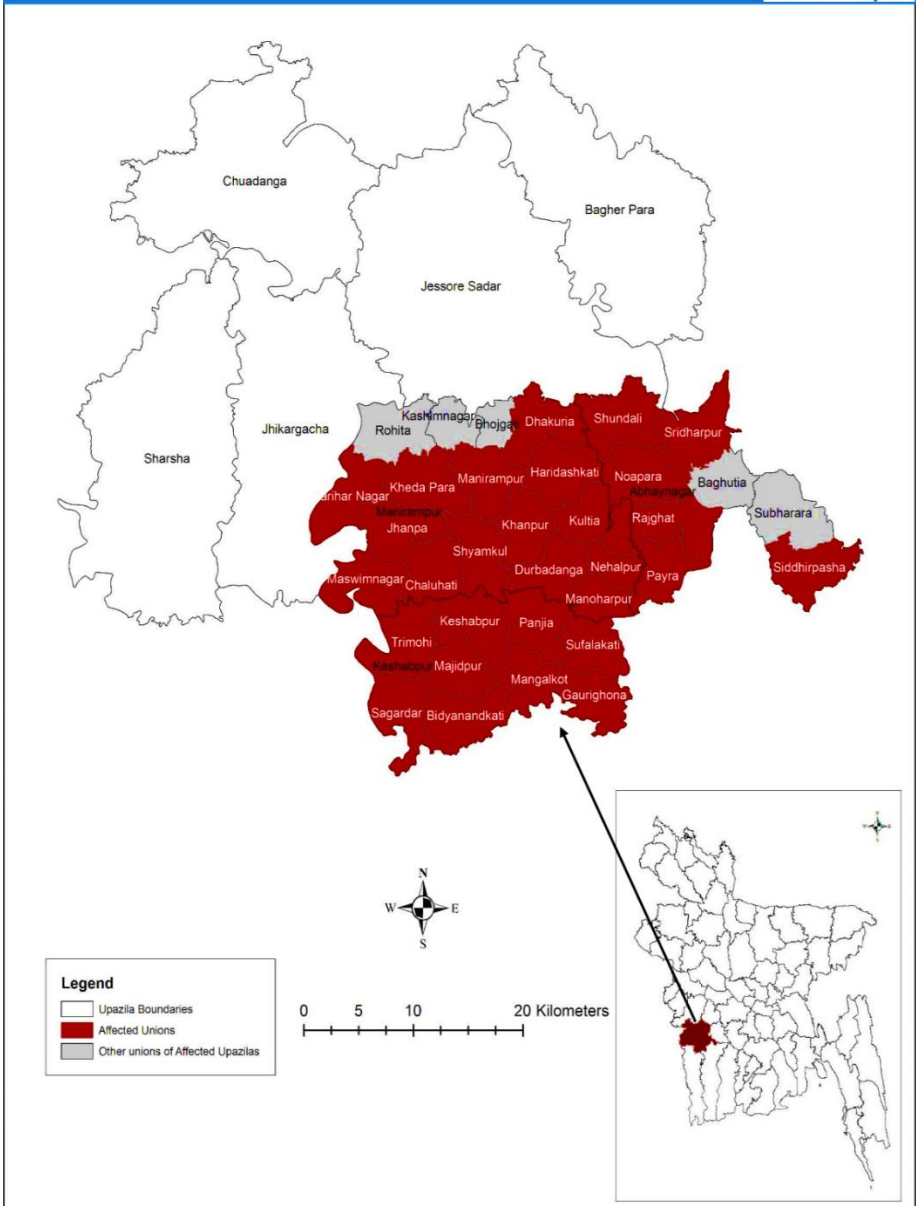
District	No. of Upazila	No. of Union	Affected People		No. of displaced people	No. of death		Damage of infrastructure						Damage of crops		
			Fully	Partially		People	Domestic Animal	House		Road		Educational/religious institutions			Bridge/culverts	Embankment
								Fully	Partially	Fully	Partially	Fully	Partially			
Nilphamari	2	8	7500	20250	-	-	-	1863	4050	-	-	2	7	-	-	-
Lalmonirhat	5	26	-	249300	-	-	-	-	50650	-	-	-	4	-	-	-
Kurigram	9	57	-	722239	3684	7	-	-	176521	-	607	20	231	39	59	17594
Rangpur	3	11	-	34836	-	8	-	-	6967	-	-	1	2	-	-	-
Gaibandha	4	34	-	276305	-	9	17	-	55261	-	208	2	4	1	1	8519
Bogra	3	18	-	121000	-	-	-	-	24200	-	-	-	95	-	-	17944.6
Sirajganj	5	40	-	553981	11861	3	-	5330	127577	112	-	69	413	-	-	-
Jalalpur	7	62	-	849451	-	30	-	304	178393	334	1622	1	1160	-	64	47548
Tangail	10	84	-	461393	-	3	-	-	137549	-	-	-	-	6	-	65529.1
Kushtia	6	12	-	20325	-	-	-	-	4065	-	-	-	1	-	-	6830
Rajbari	4	16	-	122280	-	6	-	-	24456	-	-	-	1	-	-	-
Faridpur	6	19	-	97730	-	2	-	-	19546	-	-	-	-	-	-	-
Madaripur	4	38	-	46360	-	-	-	-	-	-	-	-	-	-	-	11073
Shariatpur	3	15	-	45475	-	-	-	-	9095	-	-	-	2	-	-	-
Manikganj	7	43	-	238780	600	5	-	-	48706	88	169	-	297	-	-	-
Dhaka	1	5	2475	26115	-	2	-	495	5223	-	-	1	-	2	2	-
Munshiganj	3	12	-	28775	-	-	-	-	9565	-	-	-	-	-	-	-
Chandpur	2	4	-	920	-	-	-	-	184	-	-	-	-	-	-	-
Sunamganj	9	23	-	103600	-	1	-	-	20720	-	-	-	-	-	-	-
Rajshahi	2	2	-	750	-	-	-	-	150	-	-	-	-	-	-	-
Total	95	529	9975	4019115	16145	76	17	7992	902878	534	2956	96	2217	48	120	175037

Source: NDRCC report of 31st August, 2016

Waterlogging:

Heavy rainfall in the southwest in the 2nd week of August caused waterlogging in three upazilas (Keshabpur, Abhaynagar and Manirampur) of Jessore district. In these upazilas, the excessive rain water caused waterlogging in, put together, 28 unions (Keshabpur sadar, Gaurighona, Sufalakati, Majidpur, Panjia, Bidyanandakati, Mangalkot, Sagardari and Trimohi under Keshabpur upazila; Sundoli, Paira, Siddirpasha, Shridharpur, Noapara and Rajghat under Abhaynagar upazila; and Shyamkul, Kulutia, Haridaskhati, Hariharnagar, Kheda Para, Chaluhati, Khanpur, Jhanpa, Nehalpur, Durbadanga, Dhakuria, Maswimnagar and Manoharpur under Manirampur upazila) and one municipality (Keshabpur paurashava) under Keshabpur upazila. It inundated crop fields, dwelling areas, fish enclosures, educational institutions, temples, mosques and roads as well as displaced the affected people.

Jessore: Waterlogging Affected Areas, 2016



Date of Creation: 30.08.2016

Source: PIOs of respective upazilas

Table 2: Damage Information

Sl. no.	Upazila	Union	Affected People	No. of Displaced people				No. of Death	Impacts on Infrastructure	Impact on agriculture	Source
				Male	Female	Child	Total				
1	Keshabpur	9 union (Keshabpur sadar, Gaurighona, Sufalakati, Majidpur, Panjia, Bidyanandakati, Mangalkot, Sagardari & Trimohi) and 01 Municipality	82,511	3468	2650	1254	7372	10 people killed due to snake bite	<ul style="list-style-type: none"> ▪ House: 2,694 pucca, 5,155 semi pucca houses damaged partially. ▪ Roads: 4.430 k.m pucca road, 6.100 k.m. brick road and 35 k.m. kacha road partially damaged. ▪ Educational Institutions: 75 primary school, 40 high school, 8 college and 30 madrasa partially damaged. ▪ Religious Institution: 30 mosques, 10 mandirs and 3 Church damaged 	<ul style="list-style-type: none"> ▪ 5,300 hector land totally, and 394 hector partial damaged. ▪ 1900 hector hatchery, fish and prawn hatchery damaged 	D-form (29 th August), provided by DRRO, Jessore
2	Abhaynagar	6 unions (Sundoli, Paira, Siddirpasha, Shridharpur, Noapara & Rajghat)	65,000	1000	2000	700	3700		<ul style="list-style-type: none"> ▪ House: 9000 semi pucca houses damaged partially; 5895 kacha houses destroyed partially. ▪ Roads: 25 km kacha road and 8 k.m. pucca road partially damaged. ▪ Educational Institutions: 23 primary school, 08 high school, 2 college and 3 madrasa partially damaged. ▪ Religious Institution: 11 mosques, 20 mandirs partially damaged. 	<ul style="list-style-type: none"> ▪ 5,753 hector agricultural land partially damaged. ▪ 3500 hector hatchery, fish and prawn hatchery damaged. 	D-form (29 th August), provided by DRRO, Jessore
3	Manirampur	13 unions (Shyamkul, Kulutia, Haridaskhati, Hariharnagar, Kheda Para, Chaluhati, Khanpur, Jhanpa, Nehalpur, Durbadanga, Dhakuria, Maswimnagar & Manoharpur)	120,000	1600	1600	-	3200		<ul style="list-style-type: none"> ▪ Roads: 45 k.m. kacha road partially damaged. ▪ Educational Institutions: 51 primary school, 36 high school, 6 college and 8 madrasa partially damage. ▪ Religious Institution: 24 mosques and 8 mandirs partially damaged 	<ul style="list-style-type: none"> ▪ 2930 hector agricultural land totally and 1920 hector partially damaged. ▪ 7113 hector hatchery, fish and prawn hatchery damaged 	D-form (29 th August), provided by DRRO, Jessore
	Total	28 unions & 01 municipality under 03 upazilas	267,511	6068	6050	1954	14,272	10	16,849 houses damaged; 125.53 km roads damaged; 290 educational institutions inundated; 106 religious institutions inundated;	16,297 hectors croplands damaged; 12,513 hectors hatcheries submerged;	

Bridge collapse: In this month, one ridge deformation occurrence has been reported at Chandpur district. At least 50 cracks have developed from Beltoli to Galimkha Bridge area.

Earthquake: A magnitude 6.8 earthquake struck Myanmar 25 km (16 mi) west of Chauk on August 24 with a maximum Mercalli intensity of VI (*Strong*). It struck at 4:34 pm local time, and was centered in an isolated area. Tremors from the earthquake were felt in Dhaka and Chittagong. In Dhaka, people were seen rushing out of buildings in panic as three to five jolts were felt around 4:35pm. According to USGS, the earthquake's epicentre was in north-central Myanmar near the town of Chauk. Bangladesh Meteorological Department said the origin was 526km South-East of BMD Seismic Centre in Agargaon, Dhaka. The quake was felt throughout south and southwestern Bangladesh close to the border with Myanmar.

Lightening: In this month, there are three lightening occurrences have been reported at 21st, 22nd and 23rd. the impacts are reported below.

Table 3: Loss and damage by Lightening in August 2016				
Date	Location		Impact	Source
	District	Upazila		
21 August	Dhaka	Keraniganj	1 killed	<i>NDRCC, August 22</i>
22 August	Gopalganj	Kotalipara & Kashiani	2 killed	<i>NDRCC, August 23</i>
23 August	Kishorganj	Itna	1 killed	<i>The Dhaka Tribune, August 24</i>
Total			5 people killed	

Fire: At Narayanganj D.I.T. market, Tokyo Plaza 2nd floor on a fire incident occurs on August, 10, 2016. There is no news of severe damages. On 21st August, a severe fire attack started at 6th floor of Bashndhara City Market. The shop was totally flamed. A total block of 6th floor is totally damaged. 2 or 3 person are injured.

Boat capsized: 6 dead are viciously dead in Harinbari village of Ratandia Union of Kalukhali upazila, of Rajbari district due to boat capsized at Padma river on August, 4, 2016.

Riverbank erosion: In this month, the continuous erosion of Meghna riverbank devoured the dwelling areas and agricultural lands of 1,702 families of Hamarchar, Gazipur and Nilkamal Union of Sadar upazila of Chandpur district. Among them 214 houses of Sadar and Haimchar upazila are totally demolished.

Storm: In three districts namely Naogaon, Shariatpur and Natore, 2 killed and massive damages including 34 houses in storm, this month, according to the report.

The impacts and areas are below:

Table 4: Loss and damage by Storm in August 2016				
Date	Location		Impact	Source
	District	Upazila		
21 August	Naogaon	Atrai, Badalgachi, Mohadebpur	2 killed	<i>NDRCC, August 31</i>
-	Shariatpur	Jajira	Massive damages	<i>NDRCC, August 31</i>
-	Natore	Boraigram, Gurudaspur, Shingra	34 houses damaged	<i>NDRCC, August 31</i>
			2 killed and massive damages including 34 houses	

Tornado: At least five people were killed and at least 50 others were severely injured as a tornado hit parts of Faridpur Sadar's Bakunda area at 22nd August afternoon. (The Dhaka Tribune, August 22, 2016)

GOB Responses in August

Response in Flood: The Government is providing assistance to the flood affected people that include cash grant, food aid and other materials. As on 20th August 2016, GoB allocated 10,110 MT GR rice, BDT 43,450,000 GR cash for dry food in 19 districts (DDM Report, 18th August 2016).

Response in Waterlogging: The Government is providing assistance to the waterlogging affected people that include GR rice and GR cash. GoB allocated 100 MT GR rice and BDT 200,000 as GR cash (DDM Report, August, 29, 2016).

Response in Fire incidents: Each family of the dead in fire incident is donated BDT 20,000 (NDRCC Report, August, 31, 2016).

Response in Boat capsize: Each family of the dead is given BDT 20,000. The affected families are assisted by 318 MT GR rice, BDT 500,000 and 356 packet of dry food (NDRCC Report, August, 31, 2016).

Response in Riverbank erosion: 22.380 MT GR rice and BDT 45,000 are given to the affected families. 52 packets of dry food are also served to the affected families (NDRCC Report, August, 31, 2016).

Response in Storm: Each family of the dead is given BDT 25,000. Dry foods and cash money are donated to affected families (NDRCC Report, August, 31, 2016).

Conclusion

Disaster with substantially high magnitude occurred in August 2016. Flood was the most devastating hazard which existed throughout the month. Another devastating hazard was waterlogging that occurred in Jessore. It has disparaging impacts on all spheres of life of people. As well, there were low intensity disasters in different parts of the country e.g. lightening, storm, tornado, earthquake, fire incidents, and boat capsize. Amongst the disasters, the most visible one, flood, was responded on priority basis by Government and few NGOs as well as private sector organizations. The localized disasters, waterlogging, despite it caused significant damage, disruption and distress, because of their lesser visibility, did not get adequate response.